

Producers and fabricators of felt and felt products for over 120 years



DESIGNER BOARD
FELT SAMPLES

"Your economical source for industrial wool felt"

ISO 9001:2015 Certified

www.sutherlandfelt.com

- Rigid Panels - 48" X 96" X 9mm thick
- 1500 GSM (44 opsy)
- Machines/Gerbercute beautifully
- 60% Recycled PET fiber

DESIGNER BOARD FELT

- 35 Vibrant Colors in Stock
- Additional sizes available (minimum order applies)
- Custom shapes, patterns, holes/ grommets available



DB-01
SAND DOLLAR



DB-02
OAT



DB-03
MARBLE



DB-05
WHITE



DB-06
PERIWINKLE



DB-07
SALMON



DB-08
LEMON



DB-09
YELLOW



DB-10
RED



DB-11
BERRY



DB-12
PINK



DB-13
LILAC



DB-14
VIOLET



DB-15
PURPLE



DB-16
ORANGE

Call or email for a Quote Today!

PET is made via blending fibers and needle punching. Some boards are a blend of colors, and slight variations will exist in shade and needle pattern.

email: sales@sutherlandfelt.com
www.sutherlandfelt.com

248-280-0450



DB-17
PUMPKIN



DB-18
MAROON



DB-19
PEAR



DB-20
LIME



DB-21
GREEN



DB-22
HEATHER GREEN



DB-23
HONEY DEW



DB-24
SKY BLUE



DB-25
NAVY



DB-26
MIDNIGHT BLUE



DB-27
TEAL



DB-28
HICKORY



DB-29
BROWN



DB-30
EARTH BROWN



DB-31
BLUE JEAN



DB-32
STONE



DB-33
GREY



DB-34
CHARCOAL



DB-35
PEPPER



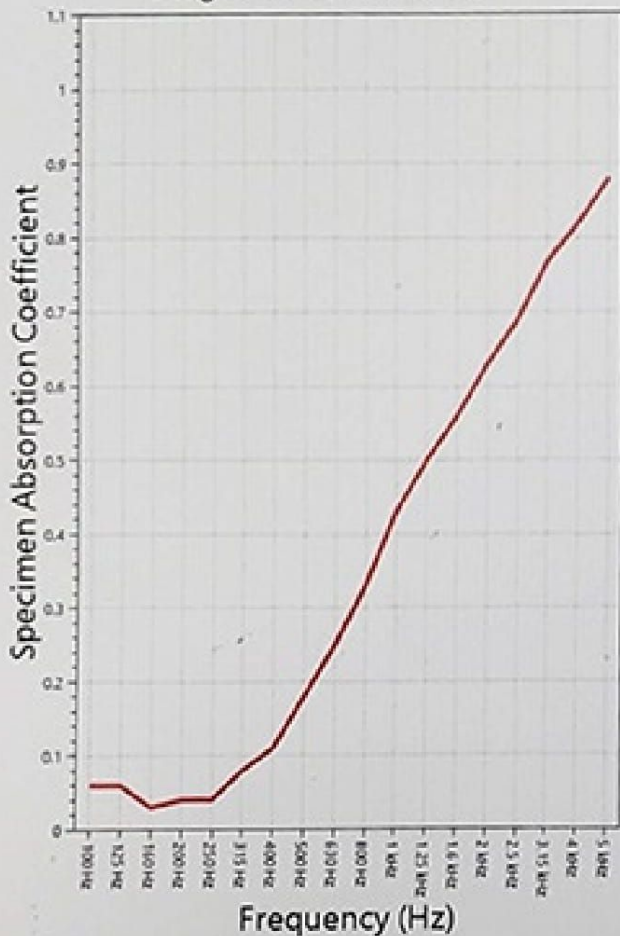
DB-36
BLACK

- Large Inventory
- Fast Order Turnaround



- CNC-Gerber Cutting
- Passes ASTM E-84

SOUND ABSORPTION REPORT
Designer Board, 9 mm thick



SAA = 0.32
NRC = 0.30



sales@sutherlandfelt.com
www.sutherlandfelt.com

Sutherland Felt Co.
700 E. Whitcomb Ave.
Madison Heights, MI 48071

248-280-0450
248-280-1034 Fax